

**G5-18A**

Compact Telehandler



**Ready to Tackle  
Big Jobs in Small Spaces**

**JLG**<sup>®</sup>





## VERSATILITY AND PERFORMANCE IN A COMPACT TELEHANDLER

For the job site where space is at a premium and productivity is a necessity, the G5-18A telehandler delivers the maneuverability and versatility you need to rise above your challenges.



The low-profile hood design and spacious cab interior give the operator more comfort and 360-degree visibility.

The G5-18A features:

- **Superior Maneuverability**  
Tight turning radius, narrow width and low machine height
- **Versatility**  
Wide variety of attachments to handle job site challenges
- **Comfortable Cab**  
Spacious cab with single joystick control and 360-degree visibility
- **Maximized Serviceability**  
Easy access to components for service and repair

**Elevate your productivity by adding a G5-18A to your fleet today.**





## At the Build Site

Keep up with the fast pace of construction.

- Distribute materials where they are needed, and unload trailers from a single side
- Maneuver through congested job sites with a 127-inch turning radius and 10.8 inches of ground clearance
- Accurately lift and place materials with 5,500 lb capacity and a maximum lift height of 18 ft 4 in.

**The powerful G5-18A helps you meet the demands of the job.**



## For the Finishing Touches

Transform your approach to landscaping.

- Quickly transport supplies across rugged ground and around active projects
- Outperform a skid steer with superior reach and lift height
- Use a bucket to load and unload loose material quickly and easily. Change to forks for transporting landscaping block or laying sod

**Reach a new level of efficiency in the G5-18A.**



## In the Garage

Handle big jobs in tight spaces.

- A tight turning radius and narrow 71.5-inch width allow for superior maneuverability in confined structures
- With a machine height less than 76 in., you can access places other machines can't
- A comfortable cab, smooth entry and exit, and a single joystick make for a productive day of work

**Go anywhere you need to work in the G5-18A.**

## Specifications

|  |                   |           |
|--|-------------------|-----------|
| Rated Capacity @ 24 in. (610 mm) Load Center | 5,500 lb          | 2,495 kg  |
| Maximum Lift Height                          | 18 ft 4 in.       | 5.6 m     |
| Capacity @ Maximum Lift Height               | 4,400 lb          | 1,996 kg  |
| Maximum Reach                                | 10 ft 11 in.      | 3.33 m    |
| Capacity @ Maximum Reach                     | 1,850 lb          | 839 kg    |
| Approximate Operating Weight                 | 11,000 lb         | 4,990 kg  |
| Length (Less Forks)                          | 150.4 in.         | 3.80 m    |
| Width  | 71.5 in.          | 1.82 m    |
| Height                                       | 75.6 in.          | 1.92 m    |
| Wheelbase                                    | 90 in.            | 2.29 m    |
| Ground Clearance                             | 10.8 in.          | 274 mm    |
| Outside Turning Radius                       | 127 in.           | 3.20 m    |
| Drive  | 4 x 4             |           |
| Engine                                       | Deutz TD 2.9 L4   |           |
| HP @ RPM                                     | 74 hp @ 1,800 rpm |           |
| Transmission                                 | Hydrostatic       |           |
| Steering                                     | All-Wheel         |           |
| Tires  | 12 x 16.5         |           |
| Maximum Travel Speed                         | 15 mph            | (25 kmph) |
| Frame Tilt Left/Right                        | —                 |           |

## Accessories & Options

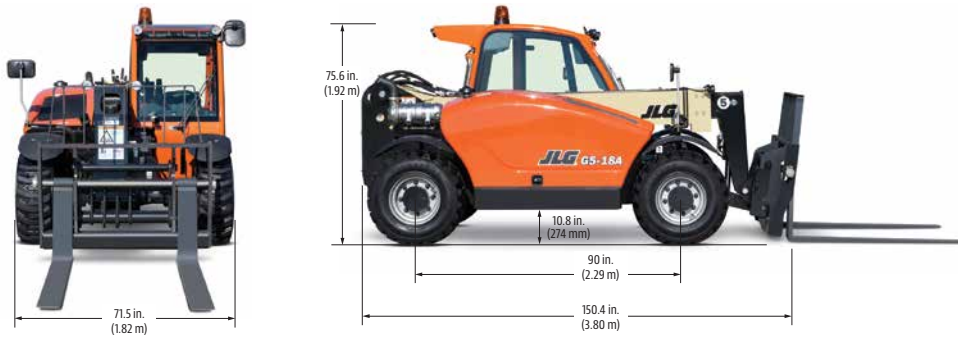
- Enclosed Cab
- Battery Disconnect Switch
- Road Light Package
- Work Light Package
- Skylight/Rear Wiper Package
- Radio Ready Kit (Enclosed Cab Only)
- Tow Hitch w/trailer plug
- Tow Hitch w/automatic pin & trailer plug
- Molded Floor Mat
- Fenders
- Brick Guard
- Air Conditioning
- Block Heater
- Tilt Steering
- Hydraulic Quick Switch
- Rear Auxiliary Hydraulics
- Universal Skid Steer Coupler
- Boom Brushes
- Reversing Fan
- Pre-cleaner

## Attachments

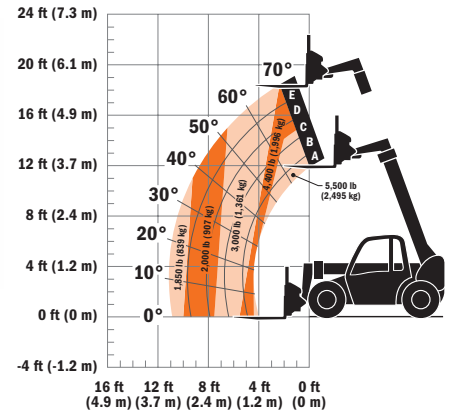
|                        |                          |                             |
|------------------------|--------------------------|-----------------------------|
| Standard Carriage      | 50 in.                   | 1.3 m                       |
| Side-tilt Carriage     | 48 in.                   | 1.2 m                       |
| Pallet Forks           | 2 in. x 4 in. x 48 in.   | 51 mm x 102 mm x 1.2 m      |
| Lumber Forks           | 1.5 in. x 6 in. x 60 in. | 38 mm x 152 mm x 1.5 m      |
| Cubing Forks           | 2 in. x 2 in. x 48 in.   | 51 mm x 51 mm x 1.2 m       |
| General Purpose Bucket | 73 in., 1.0 cu yd        | 1.85 m, 0.76 m <sup>3</sup> |
| Light Material Bucket  | 72 in., 1.7 cu yd        | 1.8 m, 1.29 m <sup>3</sup>  |
| Grapple Bucket         | 72 in., 1.0 cu yd        | 1.8 m, 0.76 m <sup>3</sup>  |
| Lifting Hook           |                          |                             |

## Dimensions

All dimensions are approximate.



## Load Chart



**VISIT JLG.COM TODAY TO LEARN MORE ABOUT THE G5-18A AND TO LOCATE A DEALER NEAR YOU.**



## The JLG "1 & 5" Warranty

JLG Industries, Inc., backs its products with its exclusive "1 & 5" Warranty. We provide coverage on all products for one (1) full year, and cover all specified major structural components for five (5) years. Due to continuous product improvements, we reserve the right to make specification and/or equipment changes without prior notification.

Part No.: 3132246  
Printed in USA

**JLG Industries, Inc.**  
1 JLG Drive  
McConnellsburg, PA 17233-9533  
Telephone 717-485-5161  
Toll-free in US 877-JLG-LIFT  
Fax 717-485-6417  
[www.jlg.com](http://www.jlg.com)

**An Oshkosh Corporation Company**