

B-SERIES CRAWLER EXCAVATORS
CX210B | CX240B

CASE
CONSTRUCTION



BUILT
STRONG

www.casece.com
EXPERTS FOR THE REAL WORLD
SINCE 1842

B-SERIES CRAWLER EXCAVATORS

DURABILITY BUILT IN

The upper-structure, redesigned to match increased hydraulic performance, ensures CASE legendary durability and reliability even in the toughest conditions. Boom and dipper feature forged brackets and reduced tolerances for increased component life minimizing downtime. Resin side shims on boom and dipper contribute to lower wear and service intervals. New synthetic hydraulic filter reduces system contamination, cutting service costs and boosting machine longevity.

LOW OPERATING COSTS

The certified fuel efficient powerful engine meets Tier III emissions regulations granting reduced fuel consumption. A large fuel tank, combined with low consumption, results in not more than a 2-day work period between refills. The Extended Maintenance System grants longer greasing intervals on all pins compared to competition. All filters and regular fill points are grouped for easy access. Radiator and cooler cores are mounted side by side for more efficient cooling and easy access for cleaning. Optional high flow refueling pump with automatic cut off reduces downtime for regular fills.

POWER AND SPEED

The advanced hydraulic system has three working modes offering higher breakout force, improved swing speeds and greater swing torque, resulting in faster cycle times and 5% increase in productivity. Power boost function is automatically engaged.

The electronic management of speed and power lowers fuel consumption and offers considerable productivity benefits in terms of outputs.

AWARDED

- The CX210B is awarded “Good Design Award” by the Design Academy of Japan.
- The CX210B won the 18th “Energy Conservation Award” by the Agency for Natural Resources and Energy in Ministry of Economy, Trade of Japan and Industry and Energy Conservation Centre, Japan.



OPERATOR COMFORT

The widened cab structure offers more leg and foot space, while the extensive glass surface contributes to give an impression of aperture to the operator.

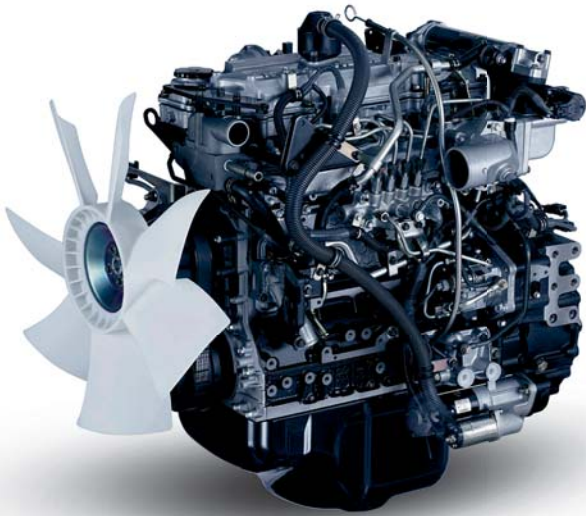
Ergonomic layout, intuitive controls and a seat that lays flat ensures optimum comfort for all operators. Additionally, the viscous fluid cab mountings and top quality insulation lead to a stress and fatigue reduction for the operator, boosting productivity and performance. Four positions consoles with return to pre-set modes will suit all operators needs.

SAFETY FIRST

All round visibility in the cab is provided by a wide glazed area with single-piece window on the right hand side for unobstructed view. The frame structure has three times the structural rigidity of previous models, reducing noise and vibration for the operator. An adjustable control console with ergonomic design makes it easier to choose the correct operating mode, increasing comfort and safety.



B-SERIES CRAWLER EXCAVATORS



ENGINE

Both CX210B and CX240B feature a proven four cylinder common rail engine meeting Tier 3 emissions standards. Compactness ensures extended durability for all components. The lower engine speed combined with the high capacity exhaust muffler provides 5% less noisy output and 20% more fuel saving. The fuel cooler contributes actively to grant fuel efficiency, while the overhead camshaft with four valves per cylinder and the exhaust gas recirculation system (EGR) reduce gaseous emissions. Auto and one-touch idle speed settings ensure maximum efficiency in all operating conditions.

All Case B series excavators can be equipped with hot climates cooling system (Tropical Package) to face temperatures above 45°.



HYDRAULICS

Both CX210B and CX240B feature a variable control hydraulic pump which maintains optimum engine rpm during heavy load work. Controls provide rapid and smooth reactions to power demand, resulting in impressive productivity. The hydraulic system features improved piston pumps with tighter tolerances, reducing system losses and resulting, with the new swing relief system, in important fuel savings.

A synthetic fibre hydraulic filter is provided as standard, protecting valuable components and prolonging hydraulic oil service life up to 5000 hours.



CONTROLS

The system mode selection (three working modes available) is intuitively set through an advanced engine throttle control and easy reachable on the fully adjustable right hand console making the CX210B and CX240B comfortable machine to operate.

- A** A-MODE: for grading, lifting and precision work.
- H** H-MODE: the best balance between productivity and fuel economy.
- SP** SP-MODE: extra speed and power for the most demanding jobs that require maximum productivity.

Auto Power boost automatically increases hydraulic pressure according to the operation's demands. Operators can store up to 10 auxiliary hydraulic flow settings in the machine's advanced hydraulic control, making it possible to use up to 10 attachments with no manual adjustment to the machine's hydraulic valves. This reduces downtime for attachment changeover, increasing productivity. The display console has a luminosity sensor to ensure that it is easy to read whatever the ambient light conditions.

**BUILT
STRONG**

OPERATOR'S CAB

The Case B series with its single-piece window and wide glazed surface provides best in class all around visibility. Despite re-profiled slim pillars, the cab is three times more rigid, for increased operator safety.

Combined with viscous cab mounts and reduced engine noise, ensure best-in-class insulation. All operators can find a comfortable position, thanks to adjustable consoles, fully reclining seat, unmatched leg room and air conditioning with nine outlet vents.

The B series cab features multiple standard options as the large storage box behind the driver's seat, bottle and can holders, a mobile phone holder and a cool box that uses the air conditioning system to regulate internal temperature.



B-SERIES CRAWLER EXCAVATORS



MAINTENANCE

Case CX B SERIES excavators are easy to service thanks to ground level access to all filters and maintenance points. The filters are remote mounted in a centralised position, providing easy and safe serviceability, and the larger fuel tank has both a drain valve and a removable service plate, when easy cleaning becomes essential as in case of fuel contamination.

An engine oil drainer cuts the risk of spillage during servicing, protecting the environment.

Centralised electrics checks, positioned behind the operator's seat, ensure cleanliness and dry operating conditions.

In addition to this, the B series excavators scores the lowest time in SAE Maintenance comparative tests, outstanding for reduced downtime and cutting operating costs.



UNDERCARRIAGE

Track components are designed for extended durability. Case sprockets are heat treated for longer service life. Durability of track guides and track links has been further improved, with new M shaped seals and increased pin hardness extending operating hours and boosting the Case reputation for robust durable design.

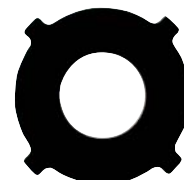
Furthermore, the track rollers have an O-ring design that prevents dirt and dust scaling.

IMPROVED PIN AND BUSHING LIFE

Extended Maintenance Bushings (EMS) are standard equipment on all Case CX B series excavators. These low maintenance bushings provide longer greasing intervals, greatly reducing daily and weekly maintenance for the operator, and increasing productivity. Anti-friction resin shims in the boom foot and head reduce noise and free play, increasing durability and reliability for the customer.



EMS chrome plated pins with brass bushing



Anti-friction shims

ATTACHMENTS AND BUCKETS

- The Case customers can choose from a variety of main booms and dipper arms to suit different applications. All of them feature heavy duty steel box sections with internal baffles to increase torsional rigidity.
- Deep groove welding ensures that the booms and arms can withstand the stress of high breakout forces, heavy lifting and attachments such as hydraulic breakers, compactors, demolition shears and crushers.
- With a different choice of booms and dipper sticks, along with a range of buckets from 0.47m³ - 1.43 m³, there is a configuration to meet the requirements of every customer's job site.



B-SERIES CRAWLER EXCAVATORS

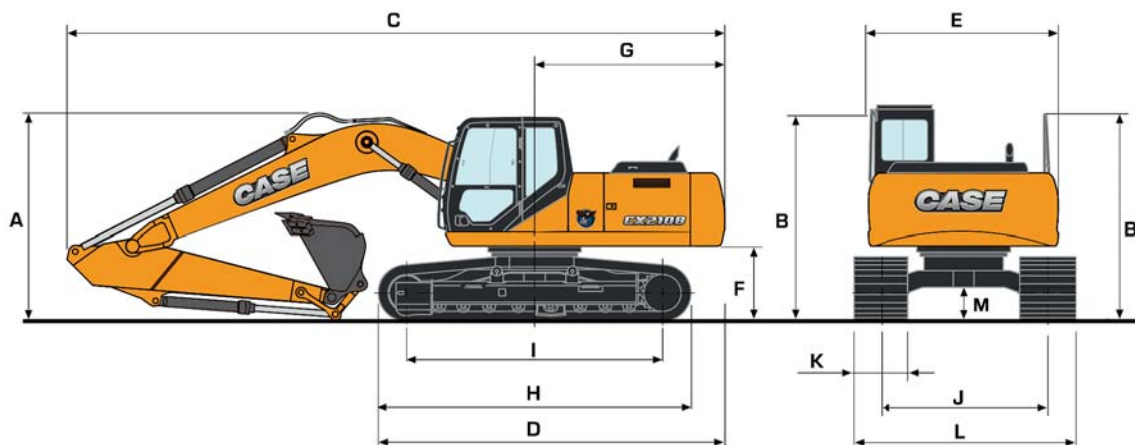
SPECIFICATIONS

CX210B

CX240B

ENGINE			
Make	ISUZU		
Type	AI-4HK1X		AH-4HK1X
Emission levels	Tier 3		
Common rail, turbo, intercooler, fuel cooler	Yes		
Direct injection	Electronically controlled		
Number of cylinders	4		
Bore - Stroke (mm)	115 x 125		
Cubic capacity (cc)	5193		
Max power (kW/hp) EEC80/1269	117/157		132/177
(@rpm)	1800		2000
Maximum Torque (Nm)	628		636
(@rpm)	1500		1500
HYDRAULIC SYSTEM			
Max output (l/min)	2 x 211		2 x 234
(@ rpm)	1800		2000
2 axial piston, variable flow pumps	Yes		
Attachment/Power Boost (bar)	343/368		
Swing (bar)	294		289
Travel (bar)	343		
Oil filtration	6 micron		
Type of oil filter	Synthetic fiber super fine High catch		
SWING			
Max upperstructure swing speed (rpm)	11.5		10.7
Swing torque (kN-m)	64		74.9
TRAVEL			
	The travel circuit is equipped with axial piston, variable flow motors		
Max travel speed (km/h)	5.6		5.5
Low travel speed (km/h)	3.4		3.5
Speed change is controlled from the instrument panel			
Automatic downshifting	Yes		
Gradeability	70% (35)		
Tractive (daN)	18920		20130
ELECTRICAL SYSTEM			
Circuit (V)	24		
Batteries (V - A/h)	2 x 12 - 92		
Circuit equipped with water-proof connectors	Yes		
Alternator (V - Amp)	24 - 50		
UNDERCARRIAGE			
Upper rollers	2		2
Lower rollers	8		9
Number of track pads	49		51
Type of shoes	Triple grouser		
CIRCUIT AND COMPONENT CAPACITIES			
Fuel tank LC (l)	410		410
Hydraulic reservoir LC (l)	147		147
Hydraulic system (l)	240		250
Travel reduction gear (per side) (l)	4.5		4.5
Swing reduction gear (l)	5		9.7
Engine (including filter change) (l)	23.1		23.1
Engine cooling system (l)	25.6		25.2

SPECIFICATIONS



GENERAL DIMENSIONS

		CX210B LC MONO			CX240B LC MONO			
		1.90 m	2.40 m	2.94 m	2.50 m	3.00 m	3.52 m	
A	Overall height (with attachment)	m	3.09	3.19	2.97	3.31	3.15	3.31
B	Height (cab/handrail)	m	2.94/2.96	2.94/2.96	2.94/2.96	3.00/3.02	3.00/3.02	3.00/3.02
C	Overall length (with attachment)	m	9.49	9.48	9.40	9.98	9.93	9.91
D	Overall length (without attachment)	m	4.96	4.96	4.96	5.27	5.27	5.27
E	Width of upperstructure	m	2.77	2.77	2.77	2.77	2.77	2.77
F	Upperstructure ground clearance	m	1.04	1.04	1.04	1.10	1.10	1.10
G	Swing radius (rear end)	m	2.72	2.72	2.72	2.94	2.94	2.94
H	Track overall length	m	4.47	4.47	4.47	4.65	4.65	4.65
I	Centre idler to centre sprocket	m	3.66	3.66	3.66	3.84	3.84	3.84
J	Track gauge	m	2.39	2.39	2.39	2.59	2.59	2.59
K	Track shoe width standard	m	600	600	600	600	600	600
L	Track overall width - 600 mm shoes	m	2.99	2.99	2.99	3.19	3.19	3.19
	- 700 mm shoes	m	3.09	3.09	3.09	3.29	3.29	3.29
	- 800 mm shoes	m	3.19	3.19	3.19	3.39	3.39	3.39
M	Ground clearance	m	0.46	0.46	0.46	0.46	0.46	0.46

WEIGHT AND GROUND PRESSURE

*With 5.70 m standard monoboomb 2.40 m dipper 698 kg, 1 m³ bucket operator and full fuel tank

**With 5.85 m standard monoboomb 3.00 m dipper - 810 kg, 1.1 m³ bucket, operator and full fuel tank

	CX210B LC*		CX240B LC**	
	WEIGHT (kg)	GROUND PRESSURE (bar)	WEIGHT (kg)	GROUND PRESSURE (bar)
shoes 600 mm steel	20900	0.43	24500	0.48
shoes 700 mm steel	21400	0.38	24800	0.42
shoes 800 mm steel	21700	0.34	25100	0.37

BUCKETS CX210B

GENERAL PURPOSE

SAE capacity (l)	410	560	700	800	900	1050	1150	1250
Width (mm)	600	750	900	1000	1100	1250	1350	1450
Weight (kg)	554	600	640	670	700	760	790	820

HEAVY DUTY

SAE capacity (l)	640	720	300
Width (mm)	1000	1100	2200
Weight (kg)	450	485	430

BUCKETS CX240B

GENERAL PURPOSE

SAE capacity (l)	475	640	810	940	1060	1180	1300	1430
Width (mm)	600	750	900	1000	1100	1200	1300	1400
Weight (kg)	525	560	660	715	725	765	805	840

HEAVY DUTY

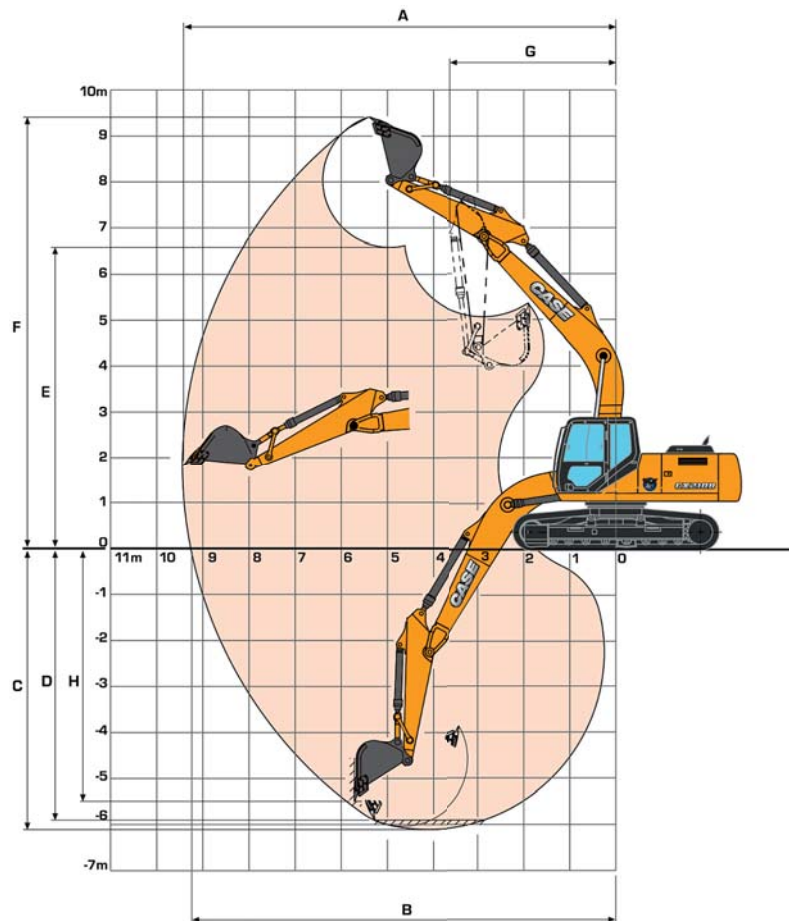
SAE capacity (l)	1060	1180	1300	1430
Width (mm)	1100	1200	1300	1400
Weight (kg)	820	865	905	950

* For other bucket sizes, please contact your CASE dealer

B-SERIES CRAWLER EXCAVATORS

PERFORMANCE DATA CX210B

with 5.70 m Standard Monoboomb - 2.40 m Dipper

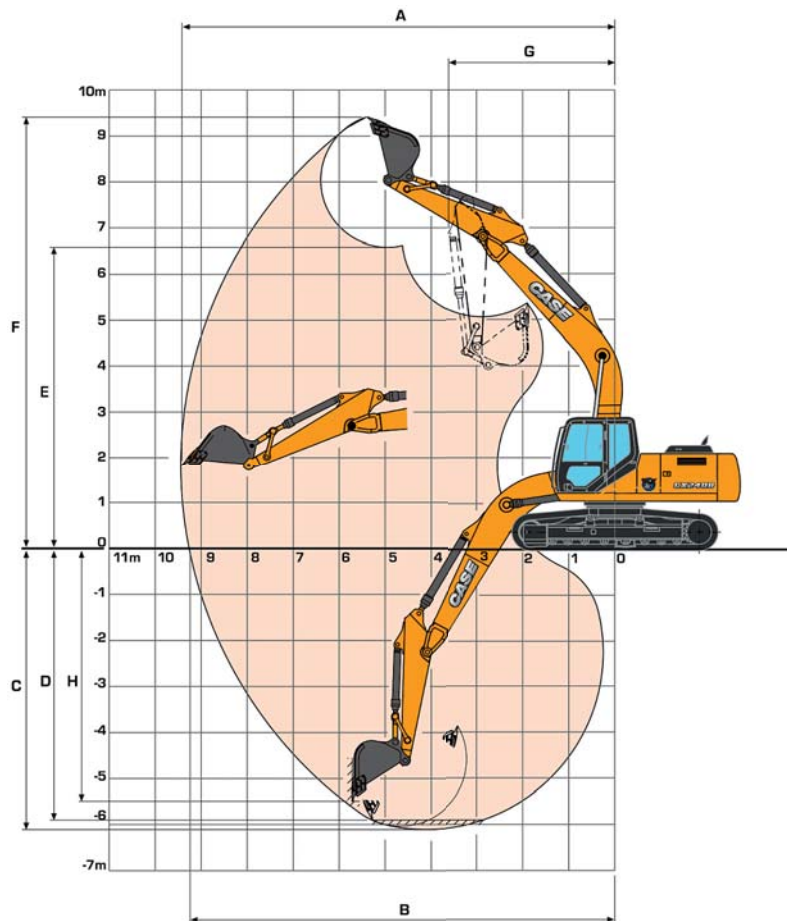


DIPPER LENGTH

		1.90 m	2.40 m	2.94 m	
A	Maximum digging reach	m	8.96	9.42	9.90
B	Maximum digging reach at ground level	m	8.77	9.24	9.73
C	Maximum digging depth	m	5.61	6.10	6.65
D	Digging depth - 2.44 m level bottom	m	5.37	5.90	6.47
E	Max dump height	m	6.36	6.62	6.84
F	Overall reach height	m	9.19	9.44	9.64
G	Minimum swing radius - attachment	m	3.58	3.60	3.60
H	Vertical straight wall dig depth	m	5.01	5.50	5.96
	Digging force - w/o Power Boost	daN	14 200	12 300	10 300
	- with Power Boost	daN	15 200	13 200	11 000
	Breakout force - w/o Power Boost	daN	14 200	14 200	14 200
	- with Power Boost	daN	15 200	15 200	15 200

PERFORMANCE DATA CX240B

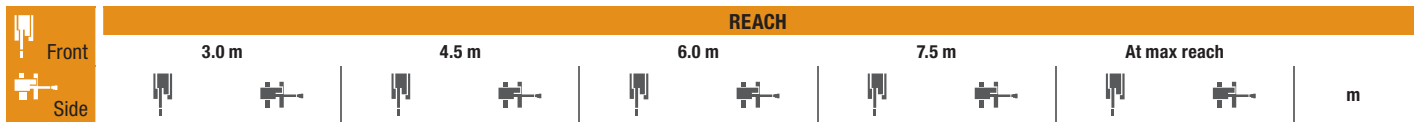
with 5.70 m Standard Monoboam - 2.50 m Dipper



DIPPER LENGTH

		2.50 m	3.00 m	3.52 m	
A	Maximum digging reach	m	9.82	10.28	10.79
B	Maximum digging reach at ground level	m	9.63	10.10	10.62
C	Maximum digging depth	m	6.40	6.90	7.42
D	Digging depth - 2.44 m level bottom	m	6.21	6.74	7.27
E	Max dump height	m	6.55	6.76	7.06
F	Overall reach height	m	9.56	9.76	10.07
G	Minimum swing radius - attachment	m	3.98	3.95	3.95
H	Vertical straight wall dig depth	m	5.70	6.14	6.68
	Digging force - w/o Power Boost	daN	14100	12000	10700
	- with Power Boost	daN	15100	12900	11500
	Breakout force - w/o Power Boost	daN	16200	16200	16200
	- with Power Boost	daN	17400	17400	17400

LIFTING CAPACITY CX210B with 5.70 m Standard monoboom



LC UNDERCARRIAGE with 2.94 m dipper, 600 mm shoes and bucket of 0.90 m³ (651 kg)

Reach (m)	3.0 m	4.5 m	6.0 m	7.5 m	At max reach
6.0 m					2716*
4.5 m			4629*	4629*	4386*
3.0 m	10 818*	10 818*	6925*	6925*	5478*
1.5 m	8056*	8056*	6344	6394*	4095
0 m	8701*	8701*	9885*	5958	6447
-1.5 m	11 921*	11 532	10 234	5808	6316
-3.0 m	14 471*	11 691	9844*	5829	6318
-4.5 m	12 089*	12 054	8432*	6014	

LC UNDERCARRIAGE with 2.40 m dipper, 600 mm shoes and bucket of 1.0 m³ (698 kg)

Reach (m)	3.0 m	4.5 m	6.0 m	7.5 m	At max reach
6.0 m			4541*	4541*	
4.5 m			5035*	4590	4717*
3.0 m		7555*	6775	5838*	4305
1.5 m		9195*	6192	6626	4025
0 m	7790*	7790*	10 091*	5880	6405
-1.5 m	12 670*	11 572	10 188*	5795	6314
-3.0 m	13 622*	11 800	9512*	5873	6369
-4.5 m	10 776*	10 776*	7619*	6138	

LC UNDERCARRIAGE with 1.90 m dipper, 600 mm shoes and bucket of 1.0 m³ (698 kg)

Reach (m)	3.0 m	4.5 m	6.0 m	7.5 m	9.0 m	At max reach
6.0 m			5079*	4733		5076*
4.5 m		6515*	6515*	5510*	4563	5180*
3.0 m		8243*	6664	6261*	4296	4789
1.5 m		9705*	6144	6637	4044	4668
0 m		10 313*	5917	6456	3884	
-1.5 m	14 179*	11 801	10 143*	5896	6410	3843
-3.0 m	12 694*	12 065	9169*	6029		
-4.5 m						7028*

* The above loads (kg) are compliant to the ISO standards and refer to the excavator equipped with bucket. The indicated loads are no more than 87% of hydraulic system lift capacity or 75% of static tipping load. Values marked with an asterisk (*) are limited by the hydraulic lifting capacity rather than the tipping load.

LIFTING CAPACITY CX240B with 5.85 m Standard monoboom



LC UNDERCARRIAGE with 3.52 m dipper, 600 mm shoes and bucket of 1.0 m³ (790 kg)

Reach (m)	3.0 m	4.5 m	6.0 m	7.5 m	9.0 m	At max reach
7.5 m						2576*
6.0 m				4353*	4317	2447*
4.5 m				5158*	4169	2442*
3.0 m		8204*	8204*	6576*	5771	5750*
1.5 m	11484*	11484*	10604*	8395	7810*	5351
0 m	10114*	10114*	12270*	7814	8091	5021
-1.5 m	12677*	12677*	12931	7549	7875	5521
-3.0 m	16904*	15468	12705*	7512	7820	4782
-4.5 m	16495*	15838	11388*	7667	7947	4893
-6.0 m	11758*	11758*	8095*	8095*		

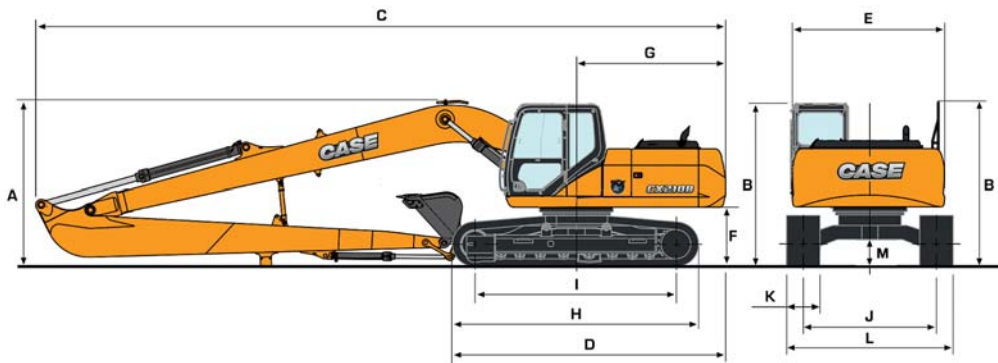
LC UNDERCARRIAGE with 3.00 m dipper, 600 mm shoes and bucket of 1.1 m³ (806 kg)

Reach (m)	3.0 m	4.5 m	6.0 m	7.5 m	9.0 m	At max reach
7.5 m						3182*
6.0 m				3906*	3906*	3039*
4.5 m			6046*	6046*	5630*	4127
3.0 m	14604*	14604*	9149*	9037	7142*	5690
1.5 m	8696*	8696*	11366*	8238	8283*	5301
0 m	9984*	9984*	12711*	7766	8078	5017
-1.5 m	13767*	13767*	12970	7591	7916	4873
-3.0 m	18165*	15702*	12466*	7623	7918	4875
-4.5 m	15129*	15129*	10676*	7851		

LC UNDERCARRIAGE with 2.50 m dipper, 600 mm shoes and bucket of 1.3 m³ (868 kg)

Reach (m)	3.0 m	4.5 m	6.0 m	7.5 m	9.0 m	At max reach
6.0 m						4446*
4.5 m			6592*	5992	6063*	4072
3.0 m		10003*	8832	7638*	5615	6026
1.5 m		12012*	8113	8350	5261	5830
0 m	9259*	9259*	13017*	7748	8077	5020
-1.5 m	14867*	14867*	13026*	7655	7967	4923
-3.0 m	17127*	15976*	12095*	7750	8029	4977
-4.5 m	13537*	13537*	9742*	8061		

SPECIFICATIONS



GENERAL DIMENSIONS

CX210B with 8.70 m Long Reach Boom
CX240B with 10.30 m Long Reach Boom

DIPPER LENGTH		CX210B LR 6.40 m
A	Overall height (with attachment)	m 3.00
B	Height (cab/handrail)	m 2.94/2.96
C	Overall length (with attachment)	m 12.47
D	Overall length (without attachment)	m 4.96
E	Width of upperstructure	m 2.77
F	Upperstructure ground clearance	m 1.04
G	Swing radius (rear end)	m 2.72
H	Track overall length	m 4.47
I	Centre idler to centre sprocket	m 3.66
J	Track gauge	m 2.39
K	Track shoe width standard	m 800
L	Track overall width - 600 mm shoes	m 2.99
	- 700 mm shoes	m 3.09
	- 800 mm shoes	m 3.19
M	Ground clearance	m 0.46

DIPPER LENGTH		CX240B LR 8.00 m
A	Overall height (with attachment)	m 3.13
B	Height (cab/handrail)	m 3.00/3.02
C	Overall length (with attachment)	m 14.38
D	Overall length (without attachment)	m 5.27
E	Width of upperstructure	m 2.77
F	Upperstructure ground clearance	m 1.10
G	Swing radius (rear end)	m 2.94
H	Track overall length	m 4.65
I	Centre idler to centre sprocket	m 3.84
J	Track gauge	m 2.59
K	Track shoe width standard	mm 800
L	Track overall width 800mm shoes	m 3.39
M	Ground clearance	m 0.46

WEIGHT AND GROUND PRESSURE

* CX210B with 8.70 m long reach boom 6.40 m dipper 330 kg, 0.37 m³ bucket operator and full fuel tank

** CX240B with 10.30 m long reach boom 8.00 m dipper 338 kg, 0.37 m³ bucket operator and full fuel tank

	CX210B LR*		CX240B LR**	
	WEIGHT (kg)	GROUND PRESSURE (bar)	WEIGHT (kg)	GROUND PRESSURE (bar)
shoes 600 mm steel	22300	0.46	-	-
shoes 800 mm steel	23100	0.36	28000	0.42

BUCKETS CX210B LR

GENERAL PURPOSE		
SAE capacity (l)	370	470
Width (mm)	610	760

DITCH		
SAE capacity (l)	760	
Width (mm)	1520	

BUCKETS CX240B LR

GENERAL PURPOSE		
SAE capacity (l)	370	570
Width (mm)	600	910

DITCH		
SAE capacity (l)	570	670
Width (mm)	1520	1680

B-SERIES CRAWLER EXCAVATORS

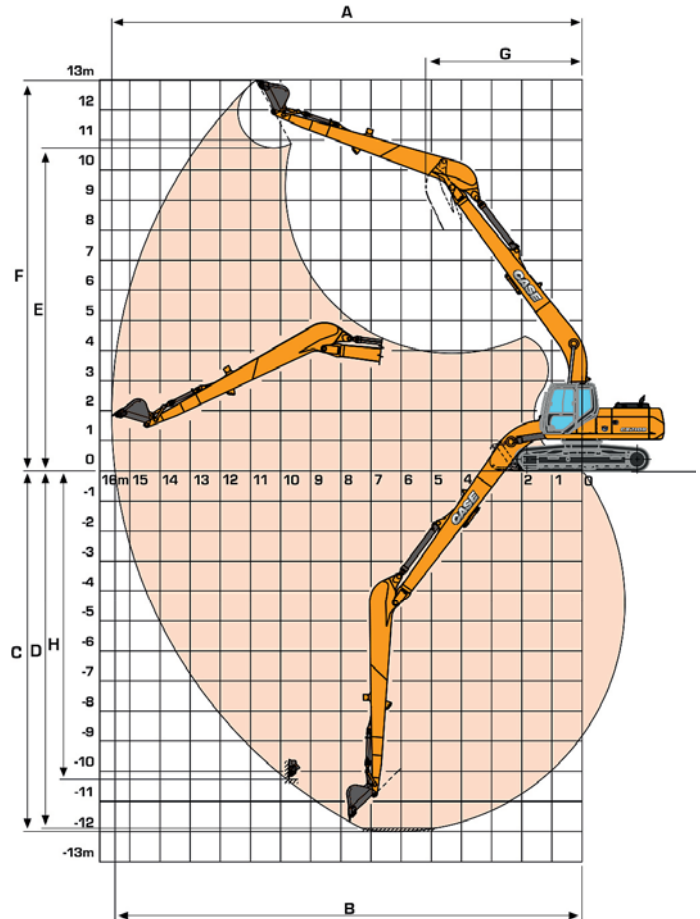
PERFORMANCE DATA CX210B LR

with 8.70 m Long Reach Boom - 6.40 m Dipper

DIPPER LENGTH

6.40 m

A	Maximum digging reach	m	15.60
B	Maximum digging reach at ground level	m	15.49
C	Maximum digging depth	m	12.01
D	Digging depth - 2.44 m level bottom	m	11.82
E	Max dump height	m	10.73
F	Overall reach height	m	12.97
G	Minimum swing radius - attachment	m	5.19
H	Vertical straight wall dig depth	m	10.29
	Digging force	daN	4600
	Breakout force	daN	6500



LIFTING CAPACITY CX210B LR

with 8.70 m Long Reach boom

Front Side	REACH									m	
	3.0 m	4.5 m	6.0 m	7.5 m	9.0 m	10.5 m	12.0 m	13.5 m	At max reach		

LR UNDERCARRIAGE with 6.40 m dipper, 800 mm shoes and bucket of 0.37 m³ (338 kg)

	3.0 m	4.5 m	6.0 m	7.5 m	9.0 m	10.5 m	12.0 m	13.5 m	At max reach											
10.5 m									1039*	1039*	11.45									
9.0 m							1456*	1456*		994*	994*	12.46								
7.5 m							1796*	1752		978*	978*	13.21								
6.0 m						1901*	1901*	1879*	1687	1317*	1257	983*	983*	13.76						
4.5 m					2236*	2236*	2101*	2101*	2008*	1599	1798*	1257	1009*	1009*	14.14					
3.0 m				2973*	2973*	2591*	2591*	2340*	1961	2170*	1497	1989	1141	1056*	974	14.34				
1.5 m	3064*	3064*	6482*	6482*	4533*	4400	3546*	3160	2968*	2362	2596*	1804	2346*	1391	1918	1073	1128*	917	14.39	
0 m	2508*	2508*	5950*	5763	5336*	3894	4073*	2840	3326*	2149	2834	1659	2274	1293	1852	1009	1229*	889	14.27	
-1.5 m	2880*	2880*	5167*	5167*	5914*	3559	4487	2599	3424	1979	2707	1540	2188	1211	1799	959	1371*	889	14.0	
-3.0 m	3482*	3482*	5366*	5154	6040	3372	4316	2444	3297	1861	2616	1454	2128	1154	1690*	930	1573*	923	13.55	
-4.5 m	4199*	4199*	5974*	5125	5955	3298	4231	2366	3227	1796	2566	1407	2101	1128			1871*	999	12.91	
-6.0 m	5016*	5016*	6860*	5198	5968	3309	4219	2356	3213	1783	2562	1404	2118	1144				2104	1136	12.06
-7.5 m	5943*	5943*	7968*	5358	5993*	3394	4278	2409	3260	1827	2616	1454						2477	1375	10.93
-9.0 m	6998*	6998*	7063*	5612	5387*	3558	4251*	2533	3379*	1942								3149*	1821	9.43
-10.5 m			5607*	5607*	4303*	3830												3398*	2855	7.34

www.casece.com

EXPERTS FOR THE REAL WORLD

SINCE 1842

CASE

CONSTRUCTION



Form No. AME5304CCGB - MediaCross Firenze - 03/18

**CASE CONSTRUCTION EQUIPMENT
CONTACT INFORMATION**

CNH INDUSTRIAL - TORINO
Via Plava 80
10135 Torino
Italy

CNH INTERNATIONAL S.A. - LUGANO
Riva Paradiso 14
6902 Paradiso - Lugano
Switzerland

CNH INDUSTRIAL - MIDDLE EAST
Dubai Regional Representative Office
Dubai Airport Free Zone, Building 2W
Office 201 - PO Box 54588
Dubai, United Arab Emirates

CNH INDUSTRIAL - SOUTH AFRICA
N1 Business Park
Slate Avenue
Cosmosdal
South Africa

NOTE: Standard and optional fittings can vary according to the demands and specific regulations of each country. The illustrations may include optional rather than standard fittings - consult your Case dealer. Furthermore, CNH Industrial reserves the right to modify machine specifications without incurring any obligation relating to such changes.

Conforms to directive 2006/42/EC

