

KATO CES

Zero Tail Swing Mini Excavator

Four HD55

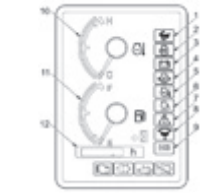


Comfortable EVOLUTION

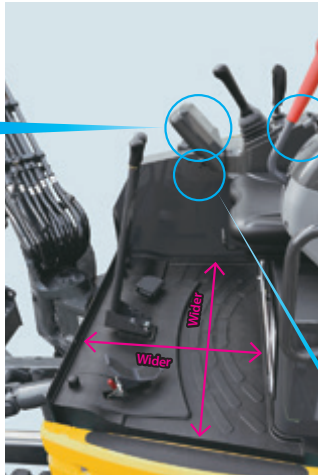
COMFORTABLE OPERATOR ROOM AND EASY MANIPULATION



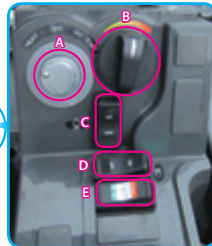
• Easily visible monitor



- 1 Travel speed indicator
- 2 Glow indicator
- 3 Battery charge warning indicator
- 4 Engine oil pressure warning indicator
- 5 Water temperature warning indicator
- 6 Auto idle indicator
- 7 Control lock warning indicator
- 8 Water-separator warning indicator
- 9 ECO mode indicator
- 10 Water temperature gauge
- 11 Fuel gauge
- 12 Hour meter



• Leg room enlarged by 20%
• Cabin room enlarged by 25%
*In comparison with our former model



• Centralized switches (Right console box)
A Engine starter switch
B Throttle dial
C Auto Idle selector switch
D Light switch
E Work mode selector switch



• Spare power port (12V 10A)

Safety EVOLUTION

WORLD-STANDARD SAFETY

- ROPS/TOPS Compliance Operator Cab and Canopy
- ROPS/TOPS Canopy (std.)
- ROPS/ TOPS Cab (opt.)
- FOPS Cab (opt.)



ROPS/TOPS Cab (opt.)

ERROR-PREVENTION

- All-lever lock
- Neutral engine-start
- Auto-parking brake in swing & traction motors



All operations are blocked when the lever is raised.

High Performance EVOLUTION

HIGH POWER DIGGING AND QUICK RESPONSE

- Digging force increased by 10%
*In comparison with our former model
- Quickly responsive 4-pump system

EASY MAINTENANCE

- Large covers for easier access



• Right hand cover



• Engine room

Hydraulic tank with air breather



Large fuel filter

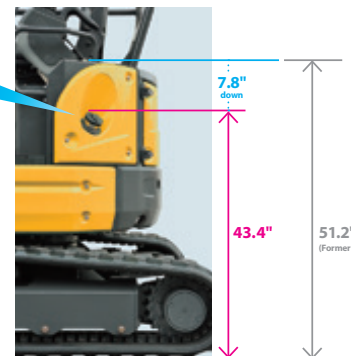


Water-separator



* The warning indicator turns on if water is collected up to the specified level.

EASY FUEL REFILLING



LOW FUEL CONSUMPTION

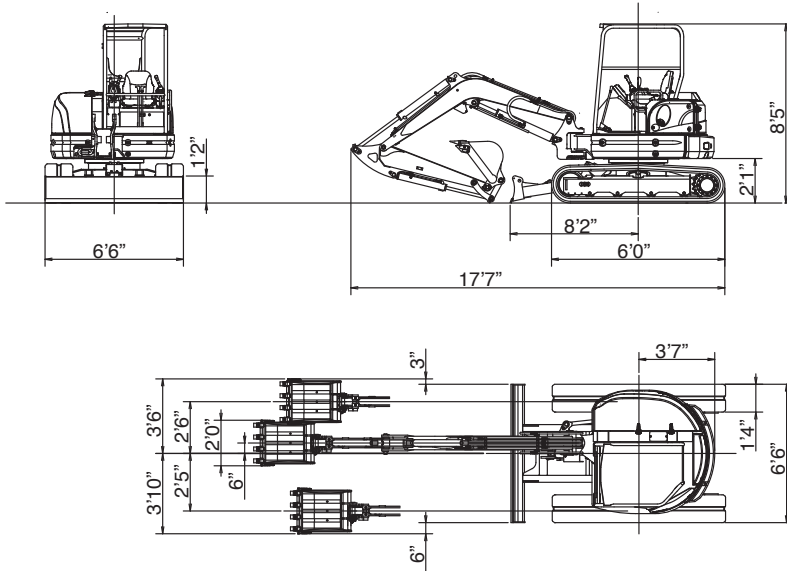
24% FUEL SAVINGS

From the New Auto Idle and Eco Mode Features.
*In comparison with our former model

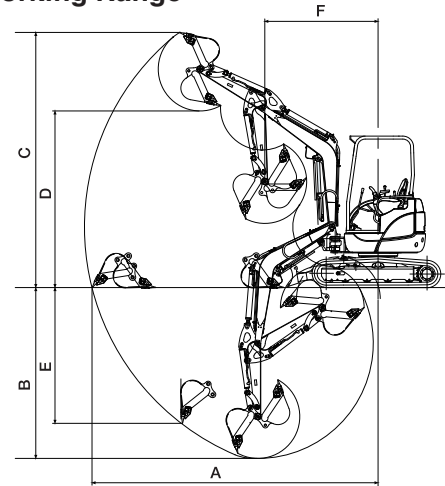
Refilling position (unit : inches)



■ Dimensions



■ Working Range

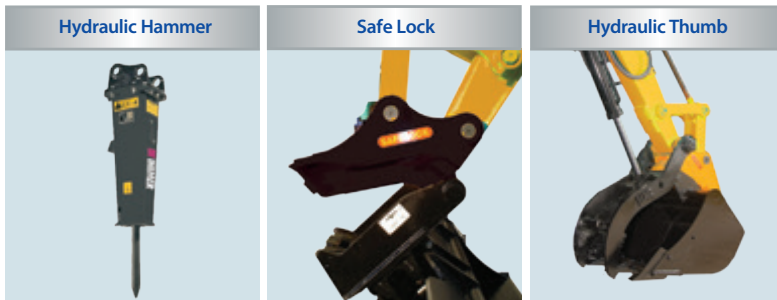


	4-Post/Cabin
A Max. digging radius	20'4"
B Max. digging depth	12'7"
C Max. digging height	18'5"
D Max. dumping height	13'0"
E Max. vertical digging depth	9'7"
F Min. front turning radius	8'1"
At right boom swing	7'0"

■ 55V4 Specifications

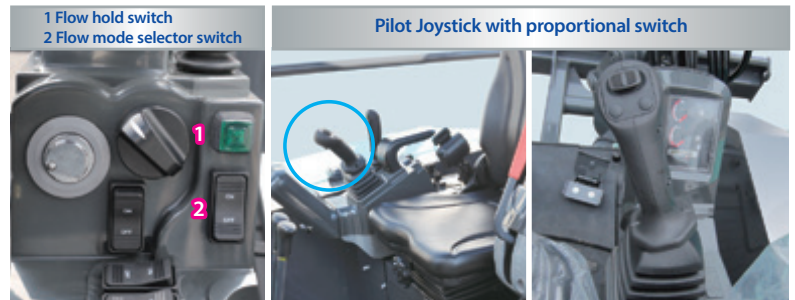
Performance		Boom swing system	
Bucket capacity	5.64 cu.ft.	Type	Boom offset with hydraulic cylinder
Bucket width	24"	Swing angle (L/R)	50°/90°
Operating weight: 4-post(Cabin)	11,800 lbs. (12,150 lbs.)	Hydraulic system	
Transportation weight: 4-post(Cabin)	11,000 lbs. (11,350 lbs.)	Pressure	3,554 psi
Swing speed	9.0 min ⁻¹	Pump *type/hydraulic flow	2 Piston/2 Gear • 15.9 gpm x 2 + 11.7 gpm
Travel speed (low/high)	1.8/2.9 mph	Dozer blade	
Gradeability	30°	Size	78"x15"
Ground pressure	4.2 psi	Lift above ground / Drop below ground	18.1"/16.9"
Max bucket digging force	10,850 lbs.	Max auxiliary flow	
Engine		1st line	15.8 gpm
Model	KUBOTA V2403-CR Tier 4 Final	2nd line (optional)	11.6 gpm
Rated output	44 hp/2,400 rpm		
Fuel tank capacity	17.4 gallons		

Optional Attachments:



Photographs may differ in some cases from actual objects. Specifications are subject to change without notice due to technical improvements or modifications.

Features:



COMPACT EXCAVATOR SALES, LLC
 400 Production Court • Elizabethtown, KY 42701
 Phone: 800.583.1447 • Fax: 270.737.0419
 WWW.KATOCES.COM